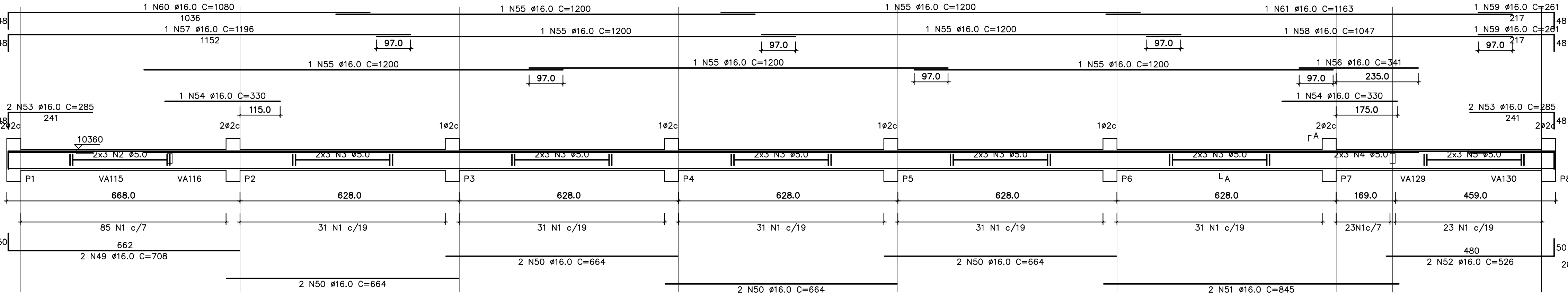
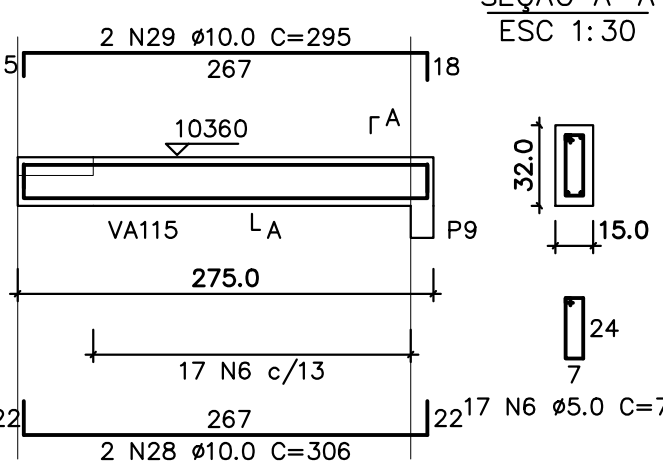


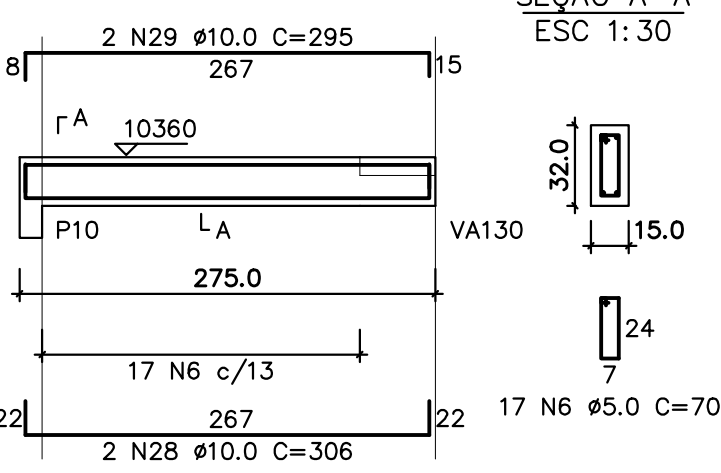
VA101
1:75



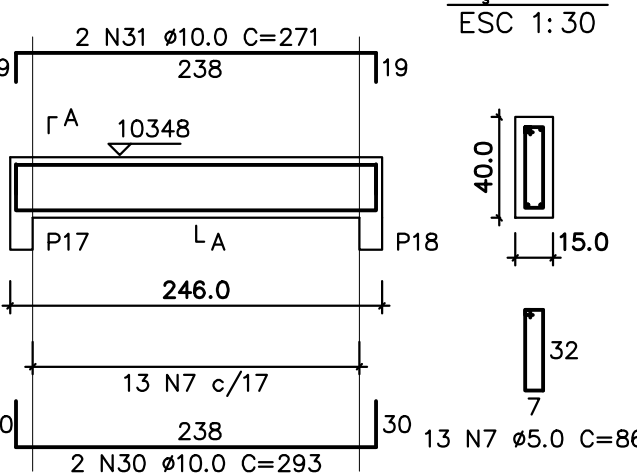
VA102
1:50



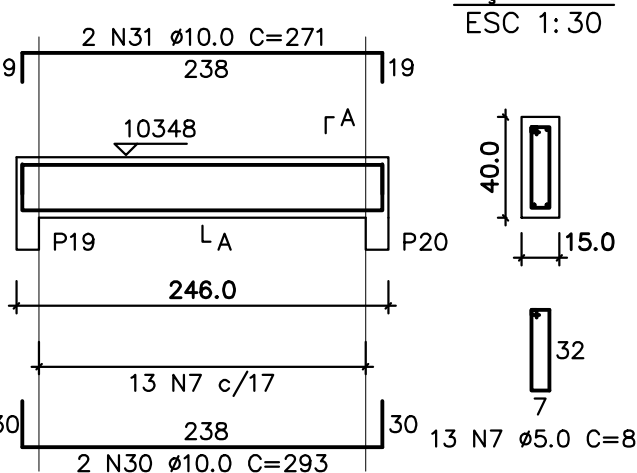
VA103
1:50



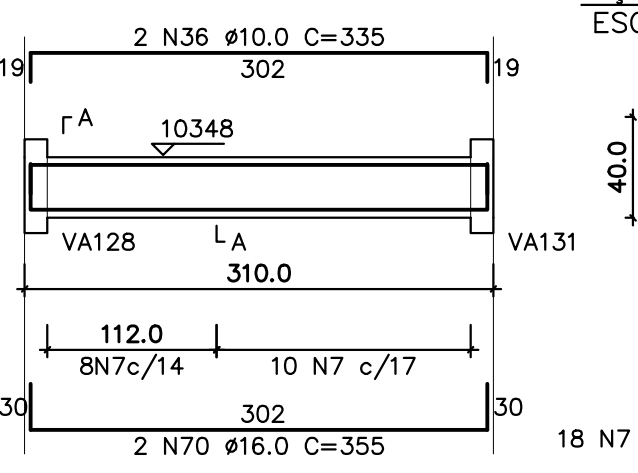
VA104
1:50



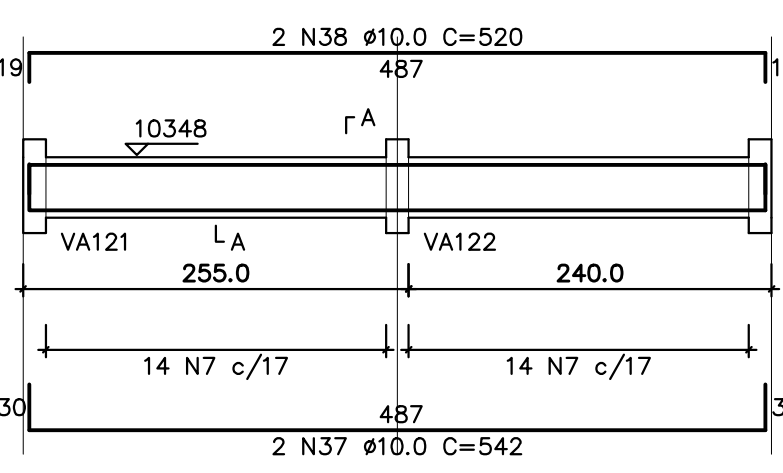
VA105
1:50



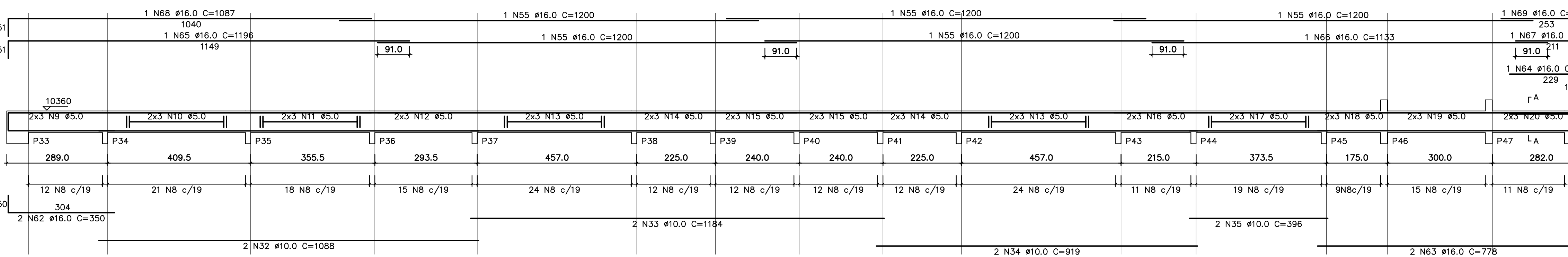
VA107
1:50



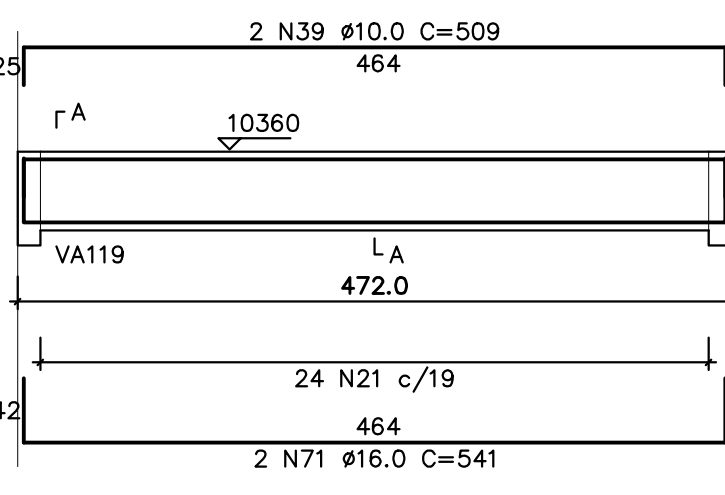
VA108
1:50



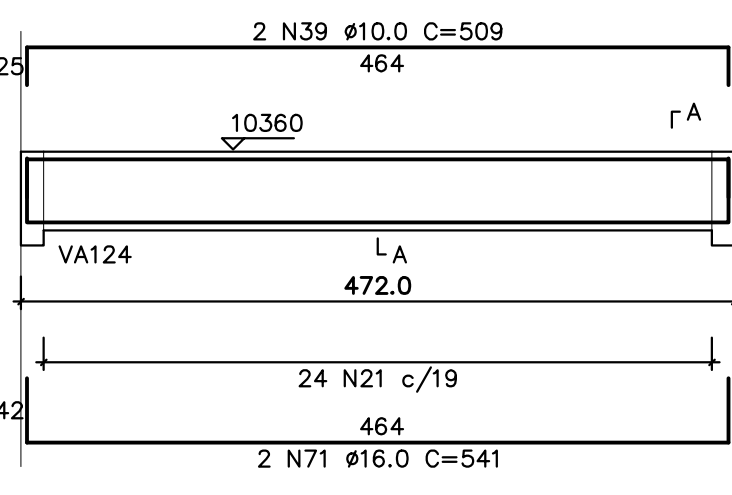
VA106
1:75



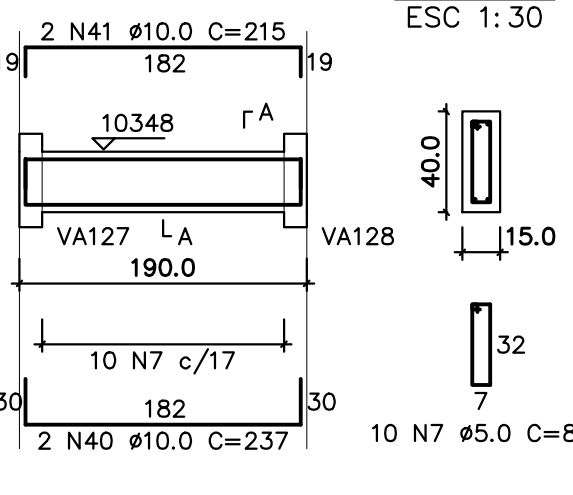
VA109
1:50



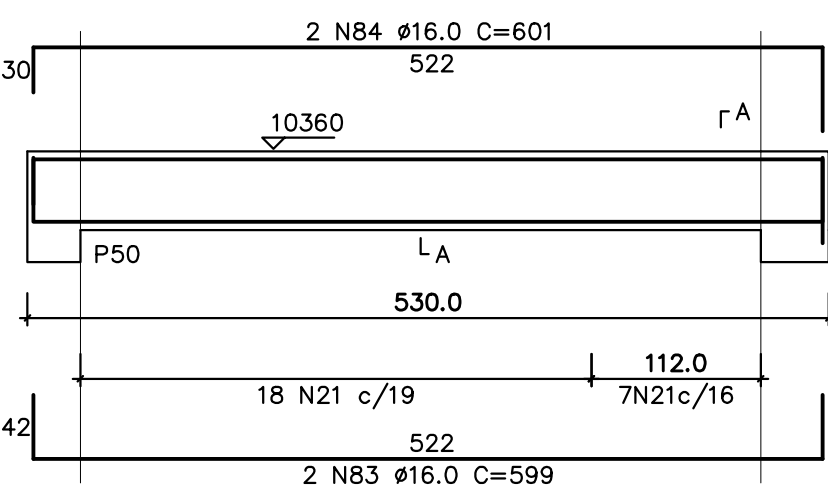
VA110
1:50



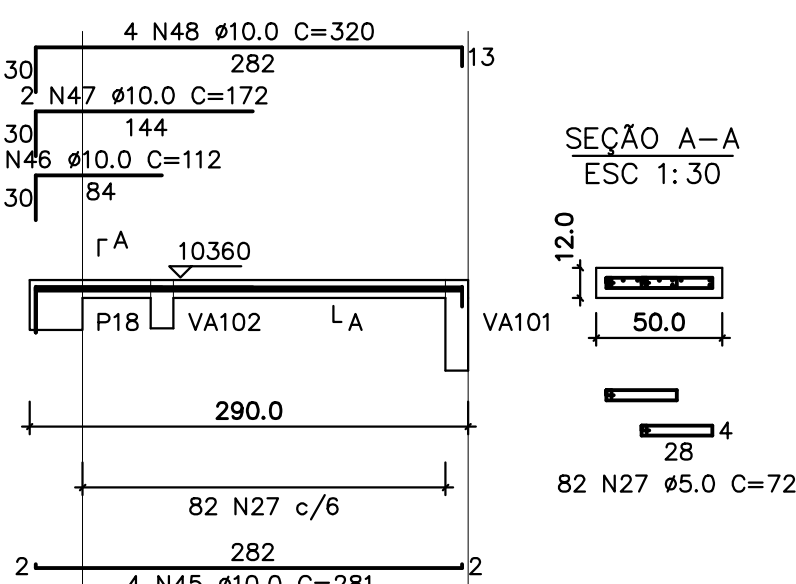
VA111
1:50



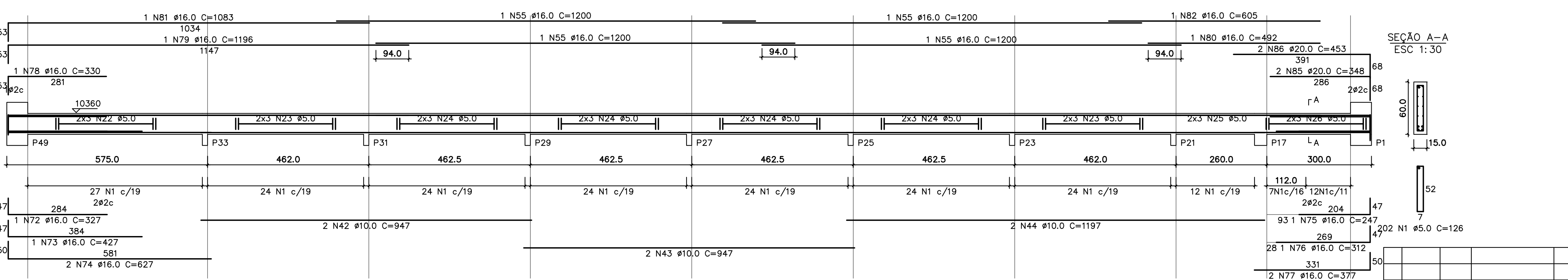
VA114
1:50



VA115
1:50



VA113
1:75



RELAÇÃO DO AÇO					
AÇO	N	DIAM	Q	UNIT (cm)	C.TOTAL (cm)
60	1	5.0	488	126	61488
	2	5.0	6	corr	3888
	3	5.0	30	corr	18840
	4	5.0	6	corr	1092
	5	5.0	6	corr	2802
	6	5.0	34	corr	2380
	7	5.0	82	corr	7052
	8	5.0	22	corr	29510
	9	5.0	6	corr	1686
	10	5.0	6	corr	2460
	11	5.0	12	corr	2136
	12	5.0	6	corr	1764
	13	5.0	12	corr	5484
	14	5.0	12	corr	2700
	15	5.0	12	corr	2880
	16	5.0	6	corr	1290
	17	5.0	6	corr	2244
	18	5.0	6	corr	2136
	19	5.0	6	corr	1800
	20	5.0	7	corr	1530
50	21	5.0	7	corr	8030
	22	5.0	6	corr	3408
	23	5.0	12	corr	5544
	24	5.0	24	corr	11112
	25	5.0	10	corr	1500
	26	5.0	6	corr	1908
	27	5.0	82	corr	5904
	28	5.0	4	corr	1224
	29	10.0	4	corr	295
	30	10.0	4	corr	293
	31	10.0	4	corr	271
	32	10.0	2	corr	1088
	33	10.0	2	corr	1184
	34	10.0	2	corr	919
	35	10.0	2	corr	1040
	36	10.0	2	corr	335
	37	10.0	2	corr	542
	38	10.0	2	corr	500
	39	10.0	4	corr	509
40	40	10.0	2	corr	237
	41	10.0	2	corr	215
	42	10.0	2	corr	1894
	43	10.0	2	corr	947
	44	10.0	2	corr	1197
	45	10.0	2	corr	281
	46	10.0	2	corr	112
	47	10.0	2	corr	172
	48	10.0	2	corr	1196
	49	16.0	2	corr	728
	50	16.0	8	corr	664
	51	16.0	2	corr	845
	52	16.0	2	corr	1052
	53	16.0	4	corr	285
	54	16.0	2	corr	330
	55	16.0	16	corr	1200
	56	16.0	1	corr	341
	57	16.0	1	corr	1196
	58	16.0	1	corr	1047
	59	16.0	2	corr	522
30	60	16.0	1	corr	1080
	61	16.0	1	corr	1163
	62	16.0	2	corr	350
	63	16.0	2	corr	778
	64	16.0	1	corr	279
	65	16.0	1	corr	1196
	66	16.0	1	corr	1133
	67	16.0	1	corr	261
	68	16.0	1	corr	1087
	69	16.0	1	corr	303
	70	16.0	2	corr	355
	71	16.0	4	corr	541
	72	16.0	1	corr	327
	73	16.0	1	corr	427
	74	16.0	2	corr	627
	75	16.0	2	corr	247
	76	16.0	1	corr	312
	77	16.0	2	corr	377
	78	16.0	1	corr	330
20	79	16.0	1	corr	1196
	80	16.0	1	corr	492
	81	16.0	1	corr	1083
	82	16.0	1	corr	605
	83	16.0	2	corr	599
	84	16.0	2	corr	601
	85	20.0	2	corr	348
	86	20.0	2	corr	453

RESUMO DO AÇO			
AÇO	DIAM	C.TOTAL (m)	PESO+10% (kg)
CA50	10.0	267.4	161.4
	16.0	546.4	949.6
	20.0	16.0	43.5
CA60	5.0	1919.6	325.1

PESO TOTAL
CA50 1174.5
CA60 325.1

Vol. concreto total = 14.21 m³
Área de forma total = 213.88 m²
fck = 300.00 kgf/cm²

ESTRUTURA DE CONCRETO - PROJETO EXECUTIVO	
ESPECIFICIDADE	
GINÁSIO CIE-R40-45 - ARMADURA DAS VIGAS AÉREAS DA 1ª LAJE	
VERIFICAÇÃO/DATA	EMISSÃO INICIAL FOLHA
CIE-28/11/13	012/016
INDICADA	IMPLANTAÇÃO MÓD. 1,2 e 3
AUTOR DO PROJETO	
ENG. PAULO SERGIO BATISTA PEREIRA	
CREA: 0600859749SP - ART: 92221220140570008	